

February Bulletin!

To those who received a white postcard,
You can pick up your My Number Card on a Sunday!

A light blue envelope will be sent when your My Number card is ready.
No need for reservations, please come straight to the City Hall's first floor lobby.

- ★When: Feb 12 (Sun), Mar 12 8:45 am to 11 am
- ★What to bring: White postcard and Residence card
- Questions: Citizen Affairs Division (☎04-7093-7855)



National Pension Insurance Payment options:
Direct deposit or Credit card.

There will be a discount for those who choose to pay with the direct deposit option:

1. If you pay earlier than the due date or in advance.
2. If you make lump payments for the set periods: 6 months, 1 year, 2 years

- ★How to apply: Consult with the bank you go to or at the Kisarazu Pension Office
- *If you plan on using this payment method by Apr 2023, please apply by Feb 28 (Tues)

- Questions: Kisarazu Pension Office (☎0438-23-7616)
Citizen Affairs Division (☎04-7093-7839)



Tax Filing Consultation

Consult with a tax accountant regarding Tax filing like income tax and inheritance tax.

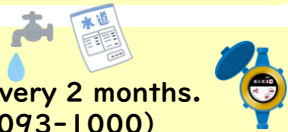
- ★When: Feb 20 (Mon) 10 am to 12 pm, 1 pm to 3 pm
- ★Where: AEON Town Tateyama (Tateyama Yawata 545-1)
- Questions: Chiba Tax Accountant Tateyama branch (☎0470-23-4132)



Change in Water meter reading and billing.

From Apr 2023, reading and billing will be done once every 2 months.

- Questions: Water Supply Customer Service (☎04-7093-1000)



How to throw away and recycle paper.

Please throw paper waste on the same day with miscellaneous papers.

- Questions: Environment Division (☎04-7093-7838)



Come and play Philippine Games with the CIR!

Please apply at the Citizen Affairs Division (☎04-7093-7822) by Feb 10.

- ★When: Feb 19 (Sun) 9:50 am to 11:30 am
- ★Where: Tojo Community Center (Hiroba 1588-1)
- ★Fee: 200 yen / ★Number of participants: 10 people
- ★Games: Pin the tail, Bring me, and Trip to Jerusalem
- Questions: Citizen Affairs Division (☎04-7093-7822)



See the 4000 bamboo lamps light up!

- ★When: Feb 15 (Wed) to Feb 26 (Sun) 4 pm to around 9 pm
- ★Where: Tanjoji Temple (Kominato 183) and near surroundings.
- Questions: Commerce, Industry and Tourism Division (☎04-7093-7837)



Let's make Valentine Sweets!



Let's learn how Valentine is celebrated in America and make:

- ☆6 Chocolate sweets: 4 types.
- 700 yen for 1 group

Please apply at the KIRA office (☎04-7093-5931) by Feb 6 (Mon).

- ★When: Feb 12 (Sun) 9:45 am to 12 pm
- ★Where: Kamogawa Reitoku Highschool (Yokosuka 815)
- ★Number of participants: 24 people (6 years old and above)
- ★Bring: Tupper ware, apron, bandana, cloth, slipper and mask



Chat Café!

Join this month's chat café where you can learn more about life in Japan and a chance to make new friends!

- ☆ No fee to join
- ☆ Topic on separation and throwing away of garbage.
- ☆ Please apply at the KIRA office (☎04-7093-5931) by Feb 22 (Wed)

- ★When: Feb 26 (Sun) 9:30 am to 11 am
- ★Where: Chuo Community Center (Maebara 60)

- Questions: Kamogawa International Relations Association (☎04-7093-5931)

