



August Bulletin!



A new Children's Medical Benefit Coupon was delivered and can be used from August 1.

Cut into small pieces and throw the old Children's Medical Benefit Coupon (which can only be used until July 31.)

Inform the Child Support Division if there are changes in:

- ◇ Place of residence
- ◇ Person who takes care of the child
- ◇ Health Insurance



Submission of Child Support Allowance Status Report is until August 30.

Support may not be given if you fail to submit. A notification was sent to you last end of July.

★What to bring: personal seal, receiver and child's insurance certificate, and certificate of allowance

■Questions: Child Support Division (Tel. 04-7093-7113)

Have fun and swim at the beach!



Where (Beach)	When	Time
Maebara, Shirosaki	July 21 (Sun.) to August 25 (Sun.)	9 am to 4 pm
Futomi, Emi, Uchiura	July 25 (Thu.) to August 25 (Sun.)	

■Questions: Commerce, Industry, and Tourism Division (Tel. 04-7093-7837)

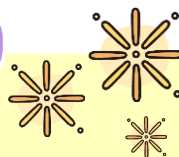
Firework display night after night IN Kominato on August 1 to 18!

★Time: 10 minute display from 8 pm.

★Where: Kominato Fishing Port Harai Embankment

★Parking: Parking lot in front of Kominato Station (up to 164 cars)

■Questions: Night after night Firework display Executive Committee Office (Tel. 04-7095-2218)



Emi Firework Festival 2024 on August 12 (Mon.)

★Time: 7:30 pm to 8 pm

★Where: Emi Fishing Port Maejima side Embankment

★Parking: Emi Community Center (up to 10 cars)

■Questions: Member of the Emi Firework Festival Executive Committee - Hasegawa san (Tel. 090-3210-2820)



See the 3000 bamboo lamps light up!

★When: August 1 (Thu.) to 18 (Sun) 4 pm to 10 pm

★Where: Tanjoji Temple (Kominato 183)

■Questions: Kamogawa Tourism Association Amatsu-Kominato branch (Tel. 04-7093-7837)



How to safely enjoy Fireworks.

Safety tips to prevent burn and accidents.

- Make sure to read the instructions written on the pack of the firework.
- Prepare a bucket filled with water, and keep it close to you.
- Do not play with fireworks on strong windy days.
- When holding the product, do not touch the lit area.
- Do not touch the fire or put it near your face.
- After lighting the product, be cautious if the fire dies halfway.
- It is very dangerous to take out the substance inside of the firework or cut the product to pieces.



■Questions: Awa County Wide-Area Municipalities Association Fire Prevention Division (Tel. 0470-22-2234)

Separate lighters and batteries from burnable garbage.

It is very dangerous to throw the following with burnable garbage.

Type	Garbage bag / How to throw
Dry cell battery	Recyclable garbage (bag with green labels) Box located at city hall and community centers.
Small batteries	Recyclable garbage (bag with green labels) ※dead batteries
Match/Fireworks	Burnable garbage (orange bag) ※Even if it is not used, soak in water before throwing.
Lighters	Non-burnable garbage (bag with yellow labels) ※Empty lighters
Spray cans・Gas tanks	Recyclable garbage (bag with green labels) ※Empty before throwing out.

■Questions: Kamogawa Garbage Center (Tel. 04-7093-5300)