

鴨川市防災マップ

Amatsu Kominato Area

Kamogawa City Disaster Prevention Map

Updated March 2015



Tsunami Flood Zones

Flood zone estimates are based on the 2011 Great East Japan Earthquake where waves reached 10m tall.

*This map is a reference for a 10m tall wave striking the coast. Depending on the circumstances, waves may not end up reaching land or they may reach land and be even larger than forecasts predict.

Map Key

Tsunami Flood Zone
Area affected by a 10m tall Tsunami

Hazardous Areas
Landslide Area
Rock Slide Area
Mud Slide Area

Legend
Tsunami Shelter
Designated Tsunami Evacuation Shelter
Designated Storm Evacuation Shelter
Evacuation Center
City Office
Fire Department
Fire Brigade
Police Department
Emergency Ration Storage
Hospital
Fishing Port
Public Phone
Koku-do
Shuyochiho-do
Ken-do
Rail Line

Area	Facility	Above Sea Level (m)	Address	Phone(04)	Storm and Flood		Earthquake	
					Emergency Evacuation Area	Evacuation Area	Emergency Evacuation Area	Evacuation Area
Amatsu	Shinmei Shrine	10	Amatsu 2954	7094-0323	●			
	Niccho-ji Temple	9	Amatsu 1850	7094-0132	●		●	
	Kaifuku-ji Temple	14	Amatsu 1553	7094-0537	●		●	
	Manpuku-ji Temple	9	Amatsu 12761	7094-0399	●		●	
	Shimachi Youth Center	6	Amatsu 20292	-	●		●	
	Yatsucho Community Center	4	Amatsu 18481	-	●		●	
	Amatsu Kindergarten	12	Amatsu 1166	7094-0111	●		●	
	Shibacho Community Center	13	Amatsu 1016	-	●		●	
	Sakamoto Torii-kan	16	Amatsu 34595	-	●		●	
	Wanpaku House	27	Amatsu 78	-	●		●	
	Hikitsuchi Youth Center	18	Amatsu 70	-	●		●	
	Hamaogi Nishi Youth Center	12	Hamaogi 11451	-	●		●	
	Amatsukominato Community Center	10	Amatsu 10927	7094-2230	●		●	
	Awa Higashi Junior High School	5	Amatsu 1033	7094-0635	●		●	
	Amatsu Elem. School	12	Amatsu 1166	7094-0104	●		●	
Amatsu Kominato Welfare Center	7	Amatsu 1631	7094-2771	●		●		
Kominato	Kifune Shrine	16	Hamaogi 1185	-	●		●	
	Yakushi Hall	16	Hamaogi 12881	-	●		●	
	Ohagi Shrine	25	Uchiura 354-1	-	●		●	
	Kosho-ji Temple	13	Uchiura 544	7095-2823	●		●	
	Sairen-ji Temple	15	Uchiura 1726	7095-2618	●		●	
	Kominato Elementary School	6	Uchiura 1923	7095-2016	●		●	
	Azuma Shrine	30	Uchiura 1806	-	●		●	
	Community Center Kominato	4	Uchiura 563	7095-2803	●		●	
	Tanjo-ji Temple	7	Kominato 183	7095-2621	●		●	
	Myoren-ji Temple	13	Kominato 129	7095-2120	●		●	
Kiyosumi	Ohagi Shrine	9	Uchiura 468	-	●		●	
	Okuyatsu Youth Center	28	Uchiura 1310-1	-	●		●	
	Zenryu-ji Temple	18	Uchiura 2738	7095-2038	●		●	
	Uchiurayama Kenmin no Mori	75	Uchiura 3328	7095-2821	●		●	
	Seicho-ji Temple	319	Kiyosumi 3321	7094-0525	●		●	
	Yomogi Fureai-kan	206	Yomogi 366	-	●		●	
	Kiyosumi Iko no Ie	320	Kiyosumi 155	-	●		●	

Emergency Evacuation Area: An area designated to provide immediate safety from a disaster.
Evacuation Area: An area designated to provide shelter and support for disaster victims. Functions may change depending on the disaster.

*In the event of an earthquake, there may not be a need to evacuate to a designated Evacuation Area. If your house sustains any damages, wait for the shaking to stop before calmly making your way to an evacuation area.

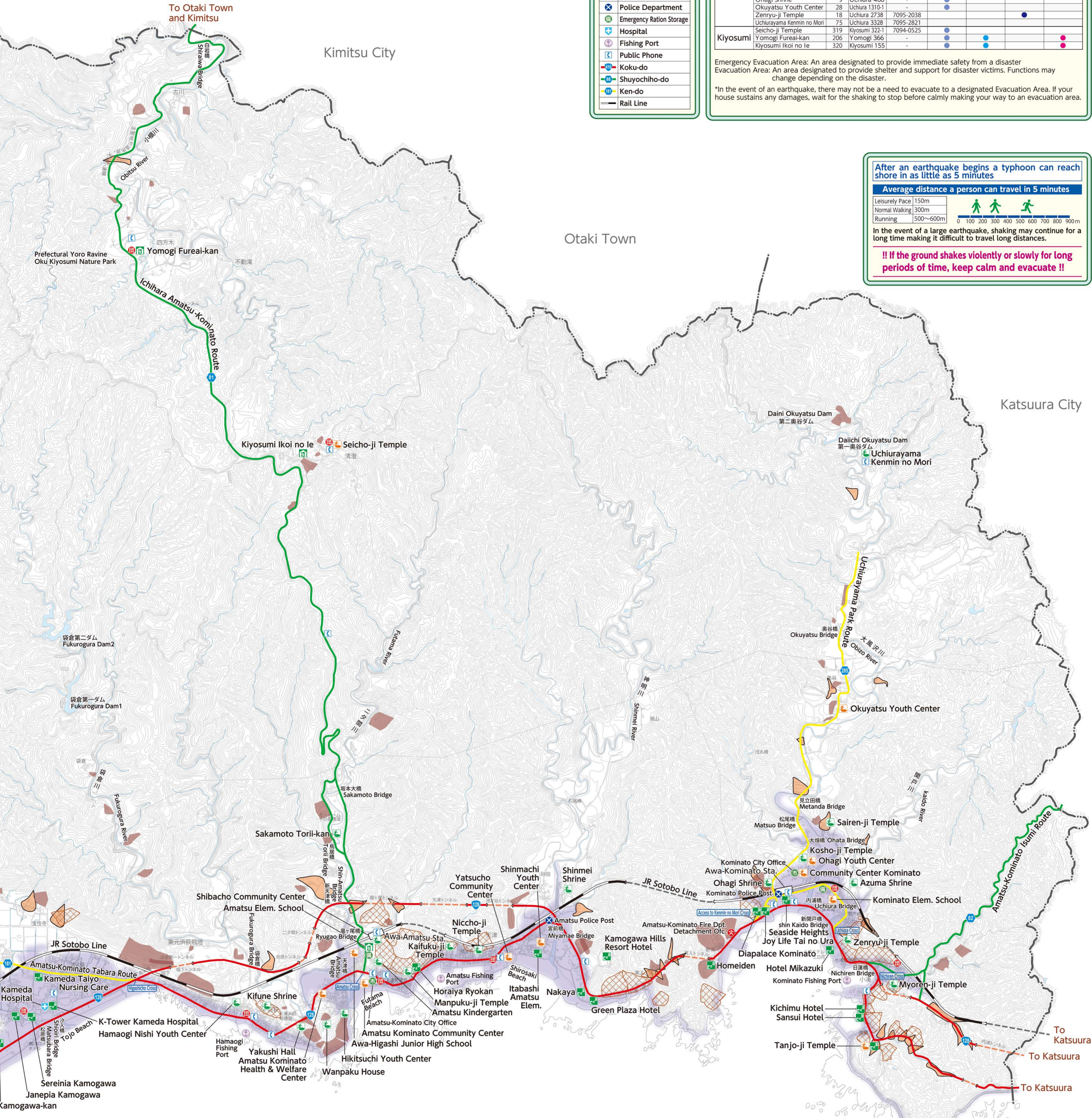
After an earthquake begins a typhoon can reach shore in as little as 5 minutes

Average distance a person can travel in 5 minutes

Leisurely Pace	150m
Normal Walking	300m
Running	500~600m

In the event of a large earthquake, shaking may continue for a long time making it difficult to travel long distances.

!! If the ground shakes violently or slowly for long periods of time, keep calm and evacuate !!



Temporary Tsunami Evacuation Buildings

In the event of a tsunami, please evacuate to the nearest designated location.

Area	Establishment	Use	Address	Phone	Evacuation Area	RC	7.27
Kominato	Kichimu	Hotel	Kominato 182-2	7095-2111	9th floor	SRC	6.91
	Sansui	Hotel	Kominato 182-2	7095-3333	7th floor	RC	6.91
	Kamogawa Mikazuki	Hotel	Uchiura 2781	7095-3111	10th floor	SRC	5.77
	Kominato Seaside Heights	Apartments	Uchiura 345-1	7095-2261	11th floor	SRC	5.09
	Joy Life Tai no Ura	Resort Home	Uchiura 56-1	7099-6018	5th floor	RC	4.41
	Diapalace Kominato	Apartments	Uchiura 67-5	7095-3071	12th floor	SRC	-
Amatsu	Homeiden	Hotel	Uchiura 14	7095-2334	3rd floor	RC	-
	Tanjo-ji Temple	Temple	Kominato 183	7095-2621	3rd floor	RC	-
	Green Plaza Kamogawa	Hotel	Amatsu 3289-2	7094-2525	4th floor	RC	3.00
	Nakaya	Hotel	Amatsu 3287	7094-1111	5th floor	RC	4.34
Kamogawa Hills Resort	Hotel	Amatsu 3164-7	7095-2535	9th floor	RC	-	
Itabashi Wakashio	School	Amatsu 1990	7094-0371	3rd floor	RC	1.85	
Horaiya	Hotel	Amatsu 1376	7094-0029	3rd floor	RC	-	

Kamogawa Emergency Alert Service

Receive emergency and disaster information directly to your phone or personal computer, including information on earthquakes, typhoons, evacuation procedures, fires, and missing or suspicious persons.

[Registration]

- By Phone
 - 1) Via QR Code: Send a blank email from the link on the following web page.
 - 1) Direct Access: Send a blank email to t-kamogawa@sg-m.jp
- By Computer: Register at <https://service.sugumail.com/kamogawa/>

2) You will receive an e-mail titled "登録完了のお知らせ" (Temporary Registration Confirmation). Open the website.
 3) Click 利用規約を確認する (Confirm the Terms of Service).
 4) Click メールアドレスを確認する (Agree to Mail Subscription).
 5) Click 入力内容を再確認する (Register Information).
 6) You will be taken to a confirmation screen and receive a confirmation email.

*** If your mobile phone is set to block SPAM mail, please change your settings to accept e-mails from the domain @sg-m.jp.**

