

**Tsunami Flood Zones**  
 Flood zone estimates are based on the 2011 Great East Japan Earthquake where waves reached 10m tall.  
 \*This map is a reference for a 10m tall wave striking the coast. Depending on the circumstances, waves may not end up reaching land or they may reach land and be even larger than forecasts predict.

**After an earthquake begins a typhoon can reach shore in as little as 5 minutes**  
**Average distance a person can travel in 5 minutes**

Leisurely Pace	150m
Normal Walking	300m
Running	500~600m

In the event of a large earthquake, shaking may continue for a long time making it difficult to travel long distances.  
**!! If the ground shakes violently or slowly for long periods of time, keep calm and evacuate !!**

**Kamogawa Emergency Alert Service**  
 Receive emergency and disaster information directly to your phone or personal computer, including information on earthquakes, typhoons, evacuation procedures, fires, and missing or suspicious persons.

**[ Registration ]**

- By Phone
  - 1) Via QR Code: Send a blank email from the link on the following web page.
  - 1) Direct Access: Send a blank email to [t-kamogawa@sg-m.jp](mailto:t-kamogawa@sg-m.jp)
- By Computer: Register at <https://service.sugumail.com/kamogawa/>

**\* If your mobile phone is set to block SPAM mail, please change your settings to accept e-mails from the domain @sg-m.jp.**

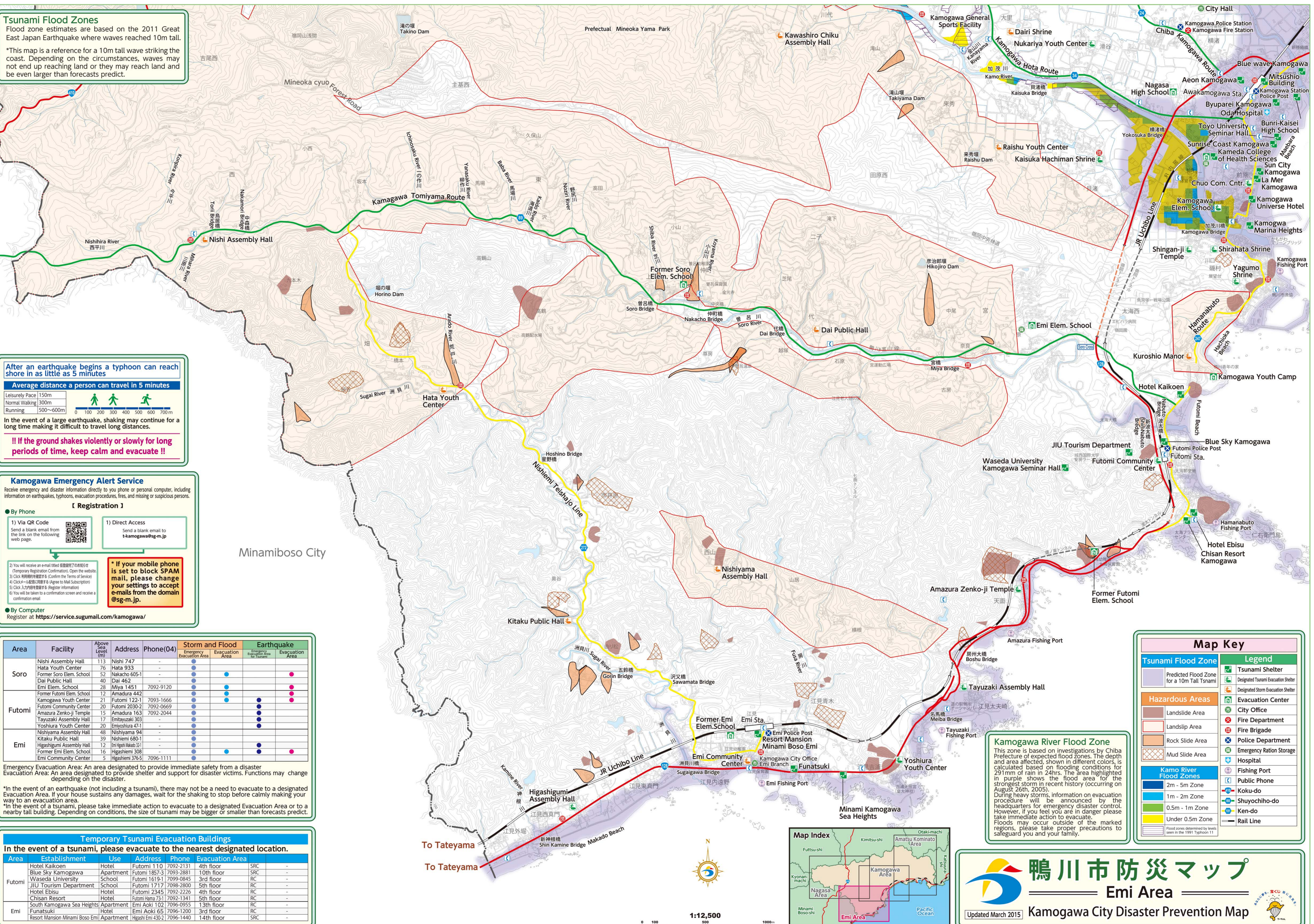
Area	Facility	Above Sea Level (m)	Address	Phone(04)	Storm and Flood	Earthquake
					Emergency Evacuation Area	Evacuation Area
Soro	Nishi Assembly Hall	113	Nishi 747	-	●	●
	Hata Youth Center	76	Hata 933	-	●	●
	Former Soro Elem. School	52	Nakacho 605-1	-	●	●
	Dai Public Hall	40	Dai 462	-	●	●
	Emi Elem. School	28	Miya 1451	7092-9120	●	●
Futomi	Former Futomi Elem. School	12	Amadura 442	-	●	●
	Kamogawa Youth Center	21	Futomi 122-1	7093-1666	●	●
	Futomi Community Center	20	Futomi 2030-2	7092-0669	●	●
	Amazura Zenko-ji Temple	15	Amadura 163	7092-2044	●	●
	Tayuzaki Assembly Hall	17	Emiyuzaki 303	-	●	●
Emi	Yoshiura Youth Center	20	Emiyoshiura 471	-	●	●
	Nishiyama Assembly Hall	48	Nishiyama 94	-	●	●
	Kitaku Public Hall	39	Nishiemi 680-1	-	●	●
	Higashigumi Assembly Hall	12	Emi Higashi 1040-1	-	●	●
	Former Emi Elem. School	16	Higashiemi 308	7096-1111	●	●

Emergency Evacuation Area: An area designated to provide immediate safety from a disaster  
 Evacuation Area: An area designated to provide shelter and support for disaster victims. Functions may change depending on the disaster.

\*In the event of an earthquake (not including a tsunami), there may not be a need to evacuate to a designated Evacuation Area. If your house sustains any damages, wait for the shaking to stop before calmly making your way to an evacuation area.  
 \*In the event of a tsunami, please take immediate action to evacuate to a designated Evacuation Area or to a nearby tall building. Depending on conditions, the size of tsunami may be bigger or smaller than forecasts predict.

**Temporary Tsunami Evacuation Buildings**  
 In the event of a tsunami, please evacuate to the nearest designated location.

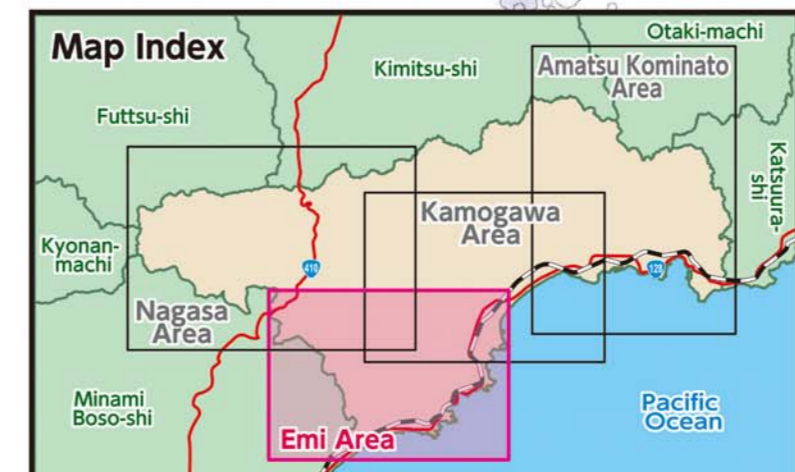
Area	Establishment	Use	Address	Phone	Evacuation Area
Futomi	Hotel Kaikoen	Hotel	Futomi 110	7092-2131	4th floor SRC
	Blue Sky Kamogawa	Apartment	Futomi 1857-3	7093-2881	10th floor SRC
	Waseda University	School	Futomi 1619-1	7099-0845	3rd floor RC
	JIU Tourism Department	School	Futomi 1717	7098-2800	5th floor RC
	Hotel Ebisu	Hotel	Futomi 2345	7092-2226	4th floor RC
Emi	Chisan Resort	Hotel	Futomi Hama 73-1	7092-1341	5th floor RC
	South Kamogawa Sea Heights	Apartment	Emi Aoki 102	7096-0955	13th floor RC
	Funatsuki	Hotel	Emi Aoki 65	7096-1200	3rd floor RC



**Map Key**

Tsunami Flood Zone	Legend
Predicted Flood Zone for a 10m Tall Tsunami	Tsunami Shelter
	Designated Tsunami Evacuation Shelter
	Designated Storm Evacuation Shelter
<b>Hazardous Areas</b>	Evacuation Center
Landslide Area	City Office
Landslip Area	Fire Department
Rock Slide Area	Fire Brigade
Mud Slide Area	Police Department
	Emergency Ration Storage
	Hospital
<b>Kamo River Flood Zones</b>	Fishing Port
2m - 5m Zone	Public Phone
1m - 2m Zone	Koku-do
0.5m - 1m Zone	Shuyochiho-do
Under 0.5m Zone	Ken-do
	Rail Line

**Kamogawa River Flood Zone**  
 This zone is based on investigations by Chiba Prefecture of expected flood zones. The depth and area affected, shown in different colors, is calculated based on flooding conditions for 291mm of rain in 24hrs. The area highlighted in purple shows the flood area for the strongest storm in recent history (occurring on August 26th, 2005). During heavy storms, information on evacuation procedure will be announced by the headquarters for emergency disaster control. However, if you feel you are in danger please take immediate action to evacuate. Floods may occur outside of the marked regions, please take proper precautions to safeguard you and your family.



**鴨川市防災マップ**  
**Emi Area**  
 Kamogawa City Disaster Prevention Map  
 Updated March 2015

