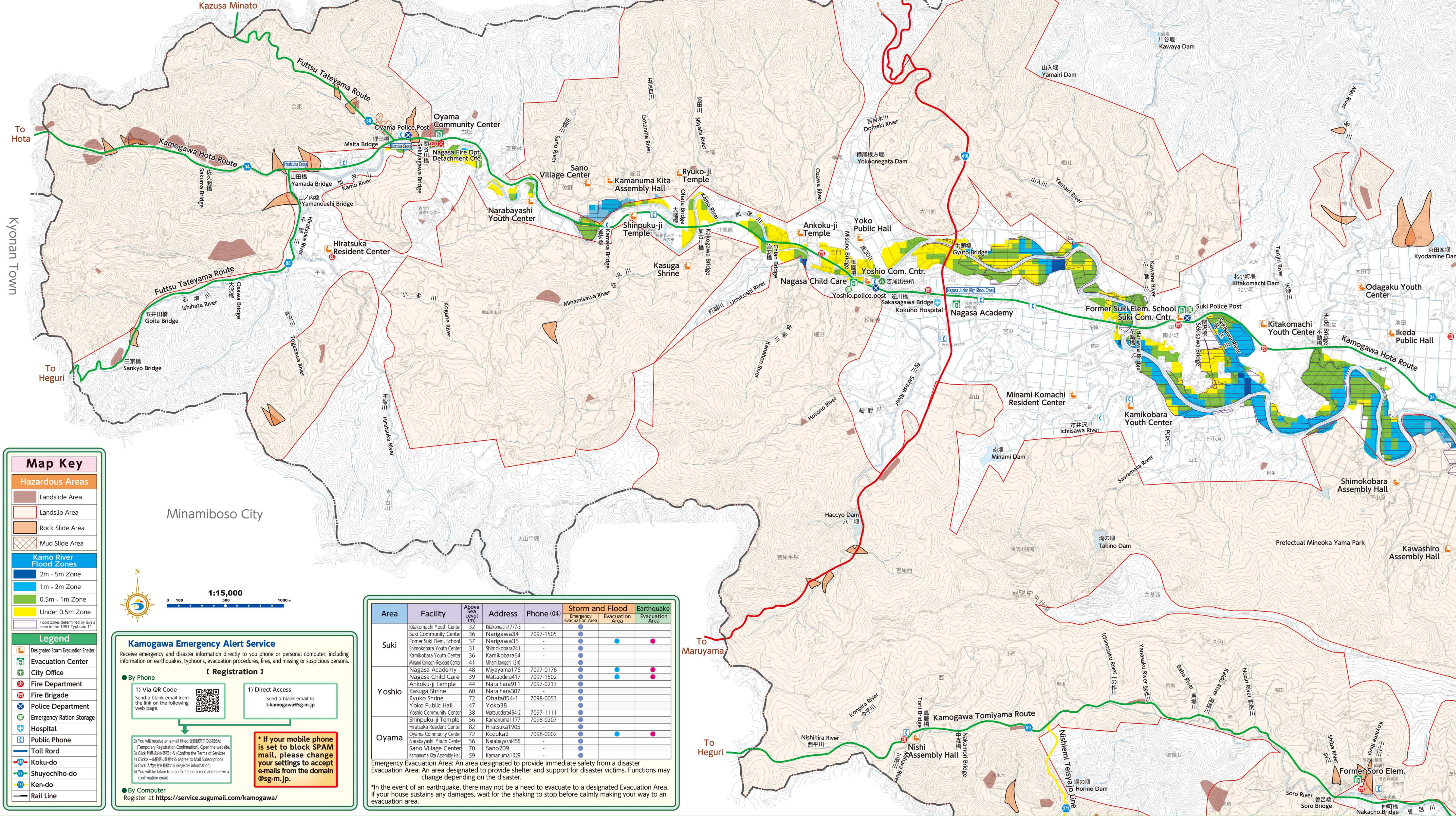
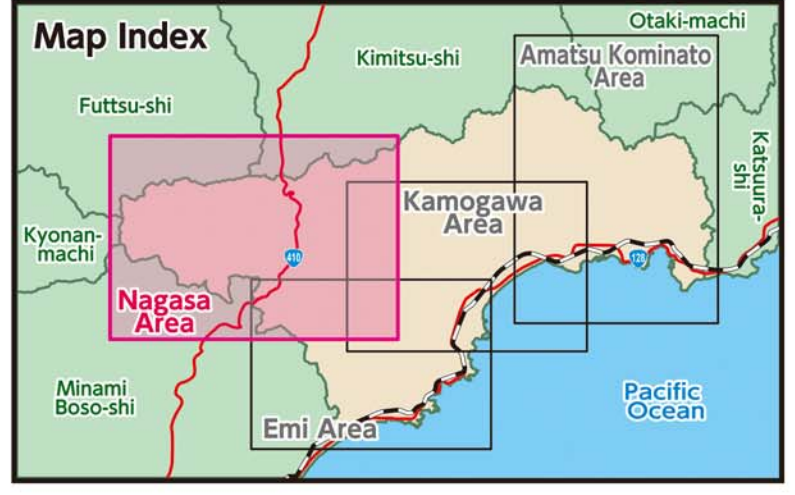


#### Kamogawa River Flood Zone

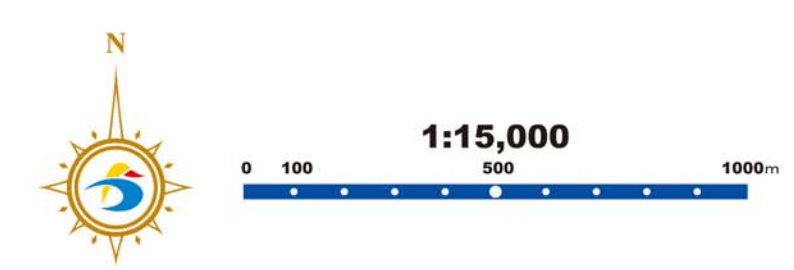
This zone is based on investigations by Chiba Prefecture of expected flood zones. The depth and area affected, shown in different colors, is calculated based on flooding conditions for 291mm of rain in 24hrs. The area outlined in purple shows the flood area for the strongest storm in recent history (occurring on August 26th, 2005). During heavy storms, information on evacuation procedure will be announced by the headquarters for emergency disaster control. However, if you feel in danger please take immediate action to evacuate.

Floods may occur outside of the marked regions, please take proper precautions to safeguard yourself.



#### Map Key

- Hazardous Areas**
  - Landslide Area
  - Landslip Area
  - Rock Slide Area
  - Mud Slide Area
- Kamo River Flood Zones**
  - 2m - 5m Zone
  - 1m - 2m Zone
  - 0.5m - 1m Zone
  - Under 0.5m Zone
- Legend**
  - Designated Storm Evacuation Shelter
  - Evacuation Center
  - City Office
  - Fire Department
  - Fire Brigade
  - Police Department
  - Emergency Ration Storage
  - Hospital
  - Public Phone
  - Toll Road
  - Koku-do
  - Shuyochiho-do
  - Ken-do
  - Rail Line



#### Kamogawa Emergency Alert Service

Receive emergency and disaster information directly to your phone or personal computer, including information on earthquakes, typhoons, evacuation procedures, fires, and missing or suspicious persons.

**[ Registration ]**

- By Phone
  - 1) Via QR Code: Send a blank email from the link on the following web page.
  - 1) Direct Access: Send a blank email to [t-kamogawa@sg-m.jp](mailto:t-kamogawa@sg-m.jp)
- By Computer
  - Register at <https://service.sugumail.com/kamogawa/>

**\* If your mobile phone is set to block SPAM mail, please change your settings to accept e-mails from the domain @sg-m.jp.**

Area	Facility	Above Sea Level (m)	Address	Phone (04)	Storm and Flood Emergency Evacuation Area	Evacuation Area	Earthquake Evacuation Area
Suki	Kitakomachi Youth Center	32	Kitakomachi1777-3	-	●		
	Suki Community Center	36	Narigawa34	7097-1505	●		
	Former Suki Elem. School	37	Narigawa35	-	●	●	●
	Shimokobara Youth Center	31	Shimokobara241	-	●		
	Kamikobara Youth Center	36	Kamikobara64	-	●		
Yoshio	Minami Komachi Resident Center	41	Minami Komachi 1210	-	●		
	Nagasa Academy	48	Miyayama176	7097-0176	●		●
	Nagasa Child Care	39	Matsudera417	7097-1502	●		
	Ankoku-ji Temple	44	Naraihara911	7097-0213	●	●	
	Kasuga Shrine	60	Naraihara307	-	●		
Oyama	Ryuko Shrine	72	Ohata854-1	7098-0053	●		
	Yoko Public Hall	47	Yoko38	-	●		
	Yoshio Community Center	38	Matsudera454-2	7097-1111	●		
	Shinpuku-ji Temple	56	Kamanuma1177	7098-0207	●		
	Hiratsuka Resident Center	82	Hiratsuka 1905	-	●		

Emergency Evacuation Area: An area designated to provide immediate safety from a disaster  
Evacuation Area: An area designated to provide shelter and support for disaster victims. Functions may change depending on the disaster.

\*In the event of an earthquake, there may not be a need to evacuate to a designated Evacuation Area. If your house sustains any damages, wait for the shaking to stop before calmly making your way to an evacuation area.